



INTRODUCING




A central graphic showing a 3D digital model of a smiling mouth with bright, glowing teeth and lips, set against a dark blue background with light trails.

3D SMILE MAKEOVERS
CASE PLANNING MADE EASY!

Let Your Patients
Test Drive Their New Smile
Before Full Treatment

What is Rich Smile Design?

Rich Smile Design is a service that helps dentists plan, demonstrate and fulfil private treatments with predictable and consistent results.

-  Manage expectations
-  Increase uptake
-  Remarket to future patients

How does it work?

At an initial consultation the patient's smile will be captured via impressions, six photographs and a 30-second video. This data is provided to our team who create a custom treatment plan based on facially-driven smile design. We then provide 3D printed models or STL files of the projected result along with an optional demonstration tray for the patient to approve before proceeding with treatment.

Why offer it to your patients?

Every Rich Smile Design case includes a visual presentation for the patient with the option to "test drive" the smile as a direct composite. Letting the patient see and try before they buy is a powerful way to manage expectations, get them invested in their treatment and increase uptake rates. The initial pictures and video can also double as fantastic before/after testimonials for marketing the service to future patients.

Treatment Solutions

The Rich Smile Design system can accommodate all manner of treatments, from simple cases through to complex restorative work. Most patients would fall into one of the packages listed below but for more specialised treatments please contact us directly and we'll create a custom package for you.



email: info@costech.co.uk



Full Smile Design



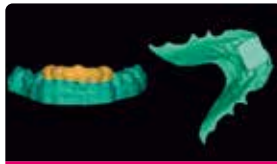
Full Mouth Rehab



Snap-On Smile



Crown Lengthening Guide



CR Registration & Bite Raise



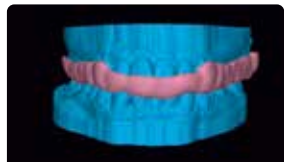
Teeth Prep Guides



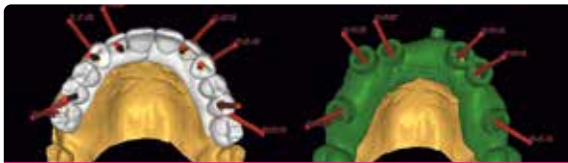
Perio Analysis



Denture Design Guide



Splint/mouthguard Guides



Implant Surgical Guides

Contact our team for the latest prices

Map your digital journey from start to finish

Step by step guide on how to achieve the smile your patient

1

Patient Data & Digitisation

To start your RSD case provide the following:

- > 15 X Photos
- > 1 X Phonetic Video
- > CBCT DICOM (For Implant & CLP Cases)
- > Tentative Treatment Plan From Clinician

2

Facially Driven 3D Motivational Plan

RSD technicians will produce a final proposed smile for your patient to review.

Choose from:

- > PDF Report & STL 3D Models
- > 3D Printed Model With Silicon Index
- > Motivational Try-In 'Test Drive Your Smile'

These two stages can be achieved in the same appointment, depending on the complexity of the case. Speak to us for detailed information.

with Rich Smile Design.

desires.

3

Facially Driven 3D Ideal Functional Plan

When the patient wants to proceed, the RSD Technicians will provide a detailed plan to achieve the patient's desired smile using RSD techniques.

4

Final RSD Guides and/or Templates Manufactured

With the advanced tools available to RSD, guides and templates are manufactured to achieve the approved final restoration.

Scan code for further information about RSD >





Presents



ADVANCED DIGITAL SMILE DESIGN COURSE



Dr. Aslam Inamdar

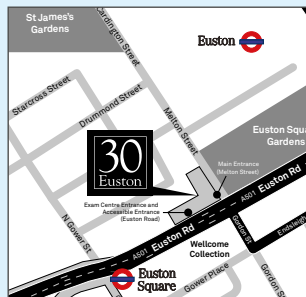
BOOK NOW

Limited Spaces

£750 LONDON
2 DAY COURSE
INC VAT

This course will give you in-depth knowledge

on template dentistry & how to achieving predictable,
precise & repeatable outcomes for your treatments.



Why 3D treatment planning and what is its role in everyday practice



What is template dentistry and how to apply it



How to start thinking in reverse for predictable outcomes



Understanding natural algorithms for better aesthetics



30 Euston Sq - London



25-26 Nov 2022

Includes: Refreshments & Lunch

costech.co.uk/rsd

Scan To Reserve Your Place Now! >



CosTech® Dental Laboratory 17-18 Lion Business Park, Dering Way, Gravesend, Kent DA12 2DN

✉ info@costech.co.uk ☎ 01474 320076 🏠 costech.co.uk